

Community Connections

Fall 2024
Issue 3, Volume 7

An update on what we do because of you!

Together we can...

Make the impossible possible

As a child, did you ever play the invisible game? There are two versions: one where you pretend no one can see you and the other where you pretend you cannot see someone else. Unfortunately, some of the people we serve are trapped in both versions of that game every day. The stigma surrounding poverty, struggle, and mental health issues make them want to pretend that no one can see them. They often have low self-worth and shrink to the sidelines. Because we tend to only see what is right in front of us, we often miss or misjudge the burdens people carry. If we look closely, we might find that we, unconsciously, play the second version of the invisible game.

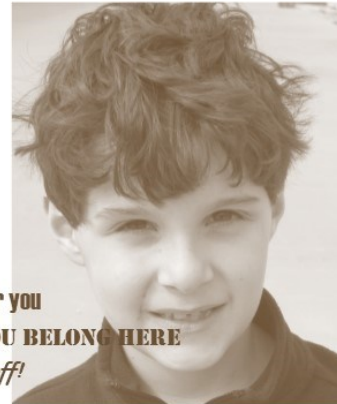
Each one of us has received help somewhere along the line. Some of us are lucky enough to have supportive, positive people around us. Some of us are not. From Maslow's Hierarchy of Needs, we know that people must have food, shelter and clothing in place to get to the next level. Safety is next, followed by love and belonging. All of our programming at JCC is designed to assist with basic needs, see people, hear them, and value them. When people don't perceive they have value, they are very limited in what they will try to accomplish. We want every person to feel visible, valuable and loved. With those pieces in place, the impossible becomes possible for every person in our community.

Inside this issue:

Make the impossible possible	1
Feed our neighbors	2
Make a positive impact	2
Offer an opportunity for growth	3
Nourish our future	4
Make Christmas bright	4
Lift the community	5
Leave a legacy of generosity	5
Expand services	6

I feel
stigma
less than
failure
invisible

marginalized



When you say

I believe in you

I hear you

You matter

YOU BELONG HERE

Your work paid off!

You

Smile

See me

Listen

Expect the best from me

Focus on strengths

"I can't" becomes **"I can"**

"It's hard" becomes **"Let's do this!"**



Our mission: The mission of Jamieson Community Center is to coordinate programs addressing the needs of all ages, provide services which extend widely into the community and surrounding area and work in cooperation with social service agencies in the region.

Our vision: Jamieson Community Center leads a collaborative effort to unify people through compassion, kindness and service.

Together we can...

Feed our neighbors

At Jamieson Community Center, the heart of our work is fueled by the support of the local community. With two food pantries—one at JCC and the other at the Recharge Teen Center—we're able to feed families thanks to the generosity of neighbors helping neighbors.

In August, we partnered with Smithfield Foods and Feed the Children to distribute essential goods to 400 families. Each family received a 25 lb. box of food, a 15 lb. box of essentials, a women's dignity box, children's books, and meat. We are especially grateful for Smithfield Foods' sponsorship and for the over 30 volunteers who helped make this event possible. Together, we provided much-needed resources, and the impact was felt across our community.

Our food pantries are entirely supported by local donations. We do not receive state or federal funding, so every contribution truly counts. In fact, the need has never been greater. In July alone, we saw a record number of over 500 visits to the JCC pantry.

We couldn't do this without you—our community. Thank you for standing with us as we continue to ensure food security.



January - September 2024



Together we can...

Make a positive impact



Sara Niemann's memories of Jamieson Community Center are filled with nostalgia. As a third-grader, she fondly recalls the "Doll Club," where children could check out dolls and enjoy cookies and milk before heading home. She also participated in the after-school program, which included weekly field trips to places like Monmouth Park and Citizens Lake.

Today, Sara gives back to JCC by volunteering twice a week at the thrift store, helping sort donations and stock items for sale. Volunteering alongside friends, she finds satisfaction in knowing her efforts make a positive impact in the community.

Sara's passion for helping others began with the Red Cross in her youth, and she continues to serve as a Disaster Relief and BioMed Volunteer. After losing her husband, volunteering became a meaningful way to fill the void in her life.





For Sara, JCC is more than just a resource; it's a place that serves everyone. "JCC is here for anyone who just needs a friend," she says, emphasizing its role in lifting people up during hard times. To her, JCC isn't just a place to seek help—it's a place where the entire community can come together to support one another.



Together we can...

Offer opportunity for growth

With incredible support from our community, JCC continues to grow and expand our services. We are especially grateful to Pattee Foundation, whose generous contributions and foresight address critical needs in our area. Our current building at 1025 S. 2nd was built with funding from Pattee Foundation and the Linda Kobler Estate. In 2017, Pattee Foundation identified gaps in progress of elementary students in core curriculum areas of reading and math. They asked us to partner with them in developing a tutoring program. When our model proved successful, Pattee Foundation made a permanent investment to ensure that Pattee Learning Center (PLC) will be here for future generations. We have been successful in leveraging that investment at both local and state levels to serve more students.

PLC Summer Session (June- August 2024)	
	Math: 42% made a 1-year gain and 42% made a 1-semester gain.
	Oral Reading: 83% made at least a 1-semester gain in oral reading.
	Word Recognition: 50% made a 1-year gain.
	Writing: 75% made at least a 1-semester gain in total words written.



Pattee Foundation's financial investment in the renovation of our planned childcare center will help meet the urgent need for childcare in our community. In addition to their gift, we would like to extend our gratitude to Smithfield Foods for contributing to the furnishings of the childcare center. Addleman Foundation granted money for the infant playground. We are also thankful for the generous donations for cribs made by Church Women United, Roseville Methodist Church, Fairview Center United Methodist Church,



Gerlaw Christian Church and Kirkwood United Methodist Church given in loving memory of Marsha Avery. Immaculate Conception School donated funds and many people have contributed both money and in-kind donations to support this important project. Similar to the learning center, Pattee Foundation made a permanent gift to help offset the operating costs of the childcare.

We are equally excited about Pattee Foundation's gift of a new resource center at 1120 S. Main St., which will allow us to relocate our Community Marketplace (Thrift Store and Food Pantry), to a larger and more accessible location. We are working with Monmouth College to involve more students in volunteer and intern roles. The move is scheduled for the first week of November. With this expansion, we look forward to serving more families and growing our services to meet the increasing needs of our community. A three-year commitment from Hunger Collaborative, United Way of Greater Warren County and the Community Health Foundation of Warren and Henderson Counties will add a Resource Coordinator at the new building to help families initiate wrap-around services, set goals, and develop life skills. our long-term goal is to help families become self-sufficient and continue their journeys of personal growth.

These vital partnerships not only allow us to address immediate needs but also provide the foundation for future growth and expanded opportunities for our community. We are deeply grateful for all of you who continue to believe in our mission and the power of community collaboration. Together, we are making a lasting difference in the lives of families in our region.



Together we can...

Nourish our future

Our Weekend Meals program, in partnership with River Bend Food Bank and the Monmouth-Roseville School District, provides six shelf-stable meals every Friday during the school year to pre-k through 6th grade students in the district. These meals, which include breakfast, lunch, and dinner for both Saturday and Sunday, help fill the gap when school meals are unavailable.



This program is made possible by the generous, ongoing support of the Twomey Foundation and Smithfield Foods, ensuring that meals consistently reach students each week. Their significant contributions lay the foundation for our work. On August 15th, *Pouring with Purpose*, hosted by Dame Fine Coffee and Abner's Bar & Lounge, raised an additional \$1,150 to help further sustain the program. The dedicated staff at Dame Fine Coffee stepped up as guest bartenders, with generous tips and donations providing a welcome boost to the Weekend Meals initiative. We are deeply grateful to everyone

involved in this community effort.

The success of this program relies not only on financial contributions but also on the commitment of volunteers like those from Security Savings Bank. Before partnering with the bank, our staff handled meal deliveries. Now, thanks to their volunteers, meals are delivered to students every week, allowing our staff to focus on other

essential tasks.

The collective efforts of volunteers and donors create a brighter future for our children.



86% of Warren County children qualify for food assistance.

Together we can...

Make Christmas bright

We are filled with gratitude and humility as we reflect on the generosity of our community. Our first gift for our Community Christmas Store came from the children at First United Methodist Church Vacation Bible School. We love to see the spirit of giving alive in such young hearts, a true testament to the values our community shares. Last year, through the combined efforts of 57 businesses, churches, organizations, and individuals, we provided a joyful Christmas for 420 children and ensured 76 families could enjoy a holiday meal together. We extend our heartfelt thanks to the 100+ volunteers who made this possible. It takes many hands to shop for the children, organize donations, assist parents with shopping, fill and pass out the Christmas baskets. About half the volunteers were youth. Your dedication truly embodies love for people who are less fortunate.



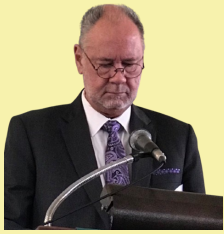
This year, we are accepting in-kind donations of personal-sized blankets and waterproof mittens or gloves (both kids and adult sizes) from November 25 to December 9. Monetary gifts allow us to purchase one brand-new outfit from Kohl's for each child, ensuring they experience the delight of receiving quality clothing.

"I would just like to thank everyone from the community that helps make Christmas a better time for my children and me. Thank you all so much," grateful parent.

Together, we can make this Christmas another season of joy and warmth.

Together we can...

Lift the community



Randy Seals, a former Executive Director of Jamieson Community Center and current Board Member, reflects on the ongoing challenges of homelessness, hunger, and hopelessness still faced by many in our country. Despite living in a nation rich with resources, too many people lack basic necessities—no one should be left hungry or cold. He believes these are not the circumstances the Lord intended for any community. Randy also emphasizes that no child should go without presents on Christmas, a cause JCC supports through its Community Christmas Store program.

JCC's impact is deeply rooted in community involvement. From its beginnings in the old Ninth Avenue church to its current expanded campus, the organization has thrived through the collective efforts of local residents. Today, JCC continues to evolve, offering essential services like childcare and a resource center to meet the community's growing needs.

As a proud member of JCC's Board, Randy recalls how the center's partnership with the City of Monmouth in the late 1970s and early 80s laid the foundation for programs like housing rehabilitation and the first commercial kitchen for senior meals. While some programs, such as housing rehab, have transitioned, others have grown stronger. Through it all, JCC's mission remains constant: to provide services that uplift the community and ensure everyone is treated with dignity and respect. "It's all about the people," Randy emphasizes. JCC continues to meet critical needs while fostering a spirit of inclusion and compassion.

Together we can...

Leave a legacy of generosity

At Jamieson Community Center, we celebrate the lives of those who have touched our hearts and strengthened our community. Since starting our tribute page in December 2022, we've honored nine remarkable individuals who made a lasting impact, including Terry Moore.



Terry was a man of few words, but his actions spoke volumes. Farming was his life, and he had a deep passion for ensuring no one, especially children, went hungry. He and his wife Pam shared three daughters and nine grandchildren. Whether hearing about Freezing for Food on WRAM 1301 or driving by a lemonade stand, Terry always stopped to give, often going above and beyond with an extra donation.

When Terry faced cancer, his thoughtful nature led him to ensure everything was in order. He decided, with Pam, that his memorial would support Jamieson Community Center's food pantry—a cause close to his heart. Pam shared how this decision became a blessing, with 145 people contributing in Terry's name. "Terry would be tickled to know that kids were being taken care of," she expressed, emphasizing the continued importance of the food pantry in meeting community needs.

A man with a 2 year old child shared that he recently moved here. This caused money to be a little tight now. When he found out about the food pantry it lifted a huge weight off his shoulders.

Terry's legacy lives on, not only through his family but through the kindness he inspired in others. His passion for helping people continues to nourish our community, reminding us all of the power of giving and the lasting difference one person can make.

Together we can...

Expand services

This is an exciting time for JCC and for our community! This issue talks about new expansion of programs and services. The new building at 1120 S. Main will provide much needed space throughout JCC. When we move the Marketplace, our Pattee Learning Center will move into the current Marketplace space, making room for the expanded number of students who receive daily tutoring. The space PLC was in will allow room for workshops, community group meetings, and our seasonal programming. In 2023, we served more than 5,000 people. In 2025, we will serve them even better, with a focus on personal development and growth.

We are so grateful to be in a community that makes our work possible. We could not do what we do without you!

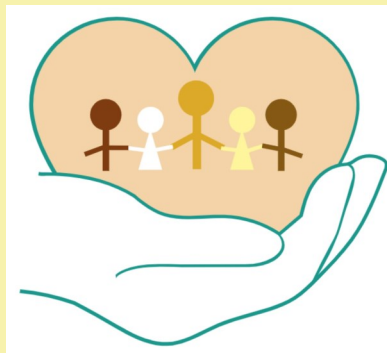
Brad Ray

Board Chair

Nancy Mowen

Executive Director

To opt out of JCC's Community Connections, please send an e-mail to thejamiesoncenter@gmail.com with OPT OUT in the subject line.





Jamieson Community Center

1025 South 2nd St. , PO Box 495, Monmouth, IL 61462

309-734-4251

For more information about our programs and services, visit our website at www.jamiesoncommunitycenter.org

Don't miss out on our events, stories and news! Follow us on   @Jamieson Community Center.